






# 1085 Widening Road Improvement Project 200-01-02

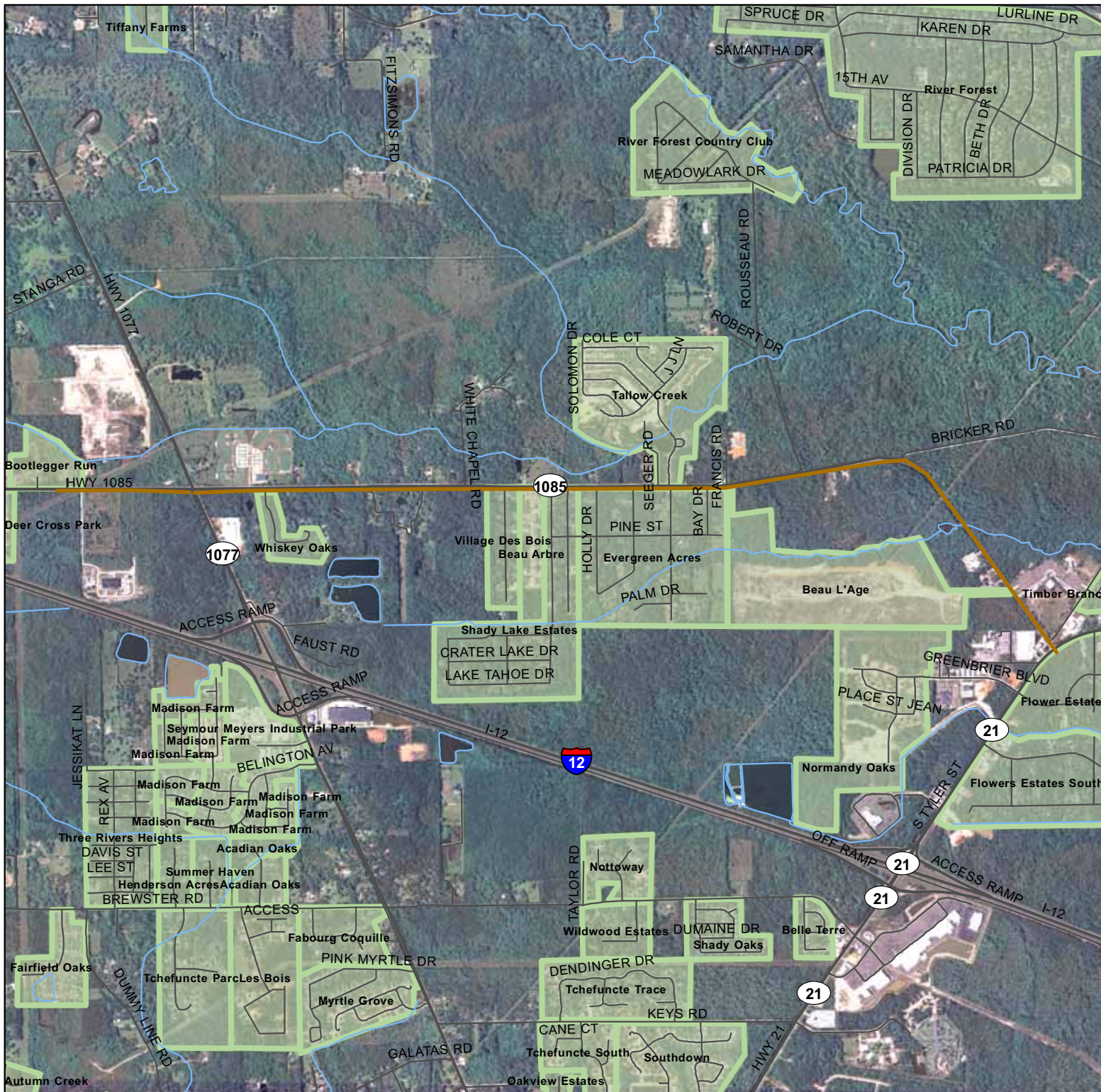
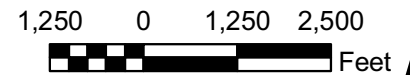


St. Tammany Parish Government  
P.O. Box 628  
Covington, LA 70434

Kevin C. Davis,  
President

## Legend

-  Road Projects
-  Streams
-  Streets
-  Major Roads
-  Subdivisions



This map was produced by St. Tammany Parish Information Services.  
Note: This map is for planning purposes only. It is not a legally recorded plan, survey, official tax map or engineering schematic, and it is not intended to be used as such.  
Map layers were created from different sources at different scales, and the actual or relative geographic position of any feature is only as accurate as the source information.  
Copyright (c) 2008. St. Tammany Parish, Louisiana. All rights reserved.