



St. Tammany Parish annual report 2009

Kevin Davis, Parish President
March 2010



Building Excellence Every Single Day

Parish President Kevin Davis

Dear Citizens of St. Tammany Parish,

Five years ago, in January of 2005, St. Tammany Parish adopted a 10-Year Capital Infrastructure Plan, outlining projects to improve the quality of our daily lives. Plans were made for transportation, drainage, environmental and other quality of life projects.

A mere nine months into that plan, Katrina made its final landfall in St. Tammany Parish, bringing flood waters six miles inland and damaging over 48,000 homes. For almost three years, our focus was immediate recovery from the storm. While we are still working in the recovery mode, over the past eighteen months we have once again been able to take time to look ahead and begin to reinterpret our 10 Year Plan for our new circumstances. The national recession has also impacted our revenues and projections, but it has not stopped us from forging ahead in key areas.

Throughout 2009, we negotiated with Southeastern Louisiana Water & Sewer Company and closed the transaction in March 2010. With this \$36 million acquisition, the parish is taking a major step in reducing future pollution of our waterways and in holding utility costs down for residents. This is by far the largest step we have taken toward our infrastructure plan for the environment and will assist us in meeting federal Environmental Protection Agency rulings.

We are making strides in transportation improvements, as road capacity projects are underway across the parish. Bond funds, combined with federal stimulus funding, are making major dents in transportation improvements. Citizens should expect to see even more road construction in the coming year that will result in improved traffic conditions all across St. Tammany.

With the assistance of the Louisiana Recovery Authority, we will begin work this year on some of the critical drainage projects outlined in the 2005 plan. In addition, I hope to see construction begin on the first phase of the east St. Tammany levee system. We are working hard to find partners in Washington, D.C. to assist us in the construction of this entire project.

It is my personal hope that we will see tremendous progress this year on our quality of life projects. The Children's Museum, University Square (Learning Center), and a Center for the Performing Arts are desperately needed in our community.

While 2010 will again be a year of expansion, 2009 will be remembered as a year we completed the first interstate interchange constructed with local funds, another interchange started with federal funds, and the first community-based health clinic in St. Tammany Parish.

For as long as I am your Parish President, I will continue to support and complete projects that I believe benefit this great parish that my staff and I serve.



Kevin Davis



Parish President
Kevin Davis



St. Tammany Parish President, Kevin Davis

St. Tammany Parish Council

Dear St. Tammany Parish Residents,

Your 2009 Parish Council continued to enact legislation managing our local government affairs. We remain dedicated to protecting the financial health, economic viability and quality of life in the parish. The mission of the Council continues to be the provision of innovative leadership, dedicated service, and forward thinking for our growing community. From an operational point of view, our dedication is not diminished by the current local economic slowdown or the unprecedented uncertainty about the national economy. Although this may translate into small changes in the levels of public service due to reductions in revenue, the Council will work to ensure these budgetary challenges are addressed through fiscal responsibility and long term financial planning.

The Council has made notable achievements during the past year, and its plans for the coming year are no less ambitious. An immense amount of time was dedicated to working in conjunction with the planning department and zoning commissioners in the implementation of the new St. Tammany Parish Unified Development Code and the zoning reclassification of all property in unincorporated St. Tammany. This project was divided into five study areas to apply improved land use regulations according to the development trends and historical features unique to each area. Three of the five areas were adopted in 2009 with the remaining two to follow in early 2010. Thanks to the valuable input and assistance from our citizens and local leaders, we are accomplishing this very important task with good timing and great success.


There have been numerous other issues the Council has addressed, including:

- convening as Board of Assessments Review to hear property tax appeals.
- implementing building moratoriums when needed to prevent inappropriate development prior to infrastructure improvements.
- supporting the closure of the Slidell Landfill.
- approving a cooperative endeavor agreement to help fund the South Slidell Levee Rehabilitation Project.
- requesting the STP Library Board of Control to fund & construct new library facilities in Abita Springs.

The Parish Council encourages all parish residents to participate in the very important 2010 Census mailed to your homes in March. This nationwide poll is distributed every 10 years and helps local government maintain accurate counts on population. The census data results determine the allocation of federal funding to assist in providing enhanced services for hospitals, schools, fire protection, public works facilities and emergency services, to name a few. Your participation in the census is very important because it will affect so many aspects of our local government and community.

The Parish Council remains committed to helping provide quality services, a safe community, and a high quality of life in the Parish. The Council advocates a connected community with a citizen focused government and will be aggressive in meeting the high expectations of St. Tammany residents, businesses and visitors. The Council meets in regular session on the first Thursday of every month at 6:00 pm in the council chambers located on Koop Drive in Mandeville. We encourage your participation in your parish government and look forward to sharing our progress over the coming year. It has been an honor to serve as your parish council chairman.

Sincerely,



Jerry Binder



District 12
Jerry Binder,
2009 Chairman
470 Hickory Drive
Slidell, LA 70458
985-641-7064 Hm.
jbinder@stpgov.org

"A significant 2009 improvement in south Slidell has been the utilization of the new Fremaux Interchange. This interchange is a transportation convenience for all area citizens. With desires for enhanced recreational opportunities for District 12 residents, I will continue to support the concept of an east side version of Pelican Park. Assignment of Capital funds to enhance our road and drainage systems will remain a priority as funding becomes available. I am honored to again serve as both your councilman and the Council Chairman in 2010 and welcome any of your ideas to assist our Parish in smart growth and prosperity."



District 5
Marty Gould,
2009 Vice-Chairman
300 Buckthorn Circle
Covington, LA 70433
985-898-2591 Office
mgouldjr@charter.net

"Difficult but encouraging best describes 2009. The business climate was tough but planning for St. Tammany's bright future moved forward in a positive direction. Comprehensive re-zoning of the Parish, which will guide growth for the next twenty years, was completed for the central & southwestern portions of St. Tammany including our district. Our residents, business leaders and parish officials can now continue making intelligent decisions for St. Tammany's future growth. We in parish government will continue working diligently to both ensure and improve the quality of life in St. Tammany Parish."

2009 St. Tammany Parish Council



District 1
Marty Dean
P.O. Box 2799
Covington, LA 70434
985-789-7444 Cell
jdean19@charter.net

"I continue to be very proud to represent District 1. I want to thank all who showed their love and dedication for our Parish during the very difficult and sometimes painstaking process of Comprehensive Re-zoning of the last year. We will keep our eyes and attention focused on what we've worked so hard for: a place where we can live, prosper, and provide a place for our children to come back to. It is true - St Tammany is the best kept secret in the Gulf South."



District 2
Gary Cooper
P.O. Box 202
Covington, LA 70434
985-590-9133 Cell
gcooper@stpgov.org

"I would like to thank everyone in District 2 for their continued support and for their input through the difficult task of the comprehensive re-zoning process. As always, I welcome any ideas on projects that would benefit our parish and community. In the future, I will continue to stand up for the people and work to preserve our quality of life, welfare, and safety."



District 3
James A. "Red" Thompson
78111 J & B Drive
Folsom, LA 70437
985-796-0038 Hm.
jthompson@stpgov.org

"I thank the people of District 3 for your continued support and encourage each and every one of you to call me with any questions or concerns you may have. I continue the task of paving gravel roads so that one day soon all roads in District 3 will be paved. We are in the process of re-zoning the North West area of St. Tammany Parish and expect that process to be completed shortly."



District 4
R. Reid Falconer
P.O. Box 1026
Madisonville, LA 70447
985-778-1538
rrfalconer@stpgov.org

"It has been a distinct honor and privilege to serve the constituents of District 4. Highlights included the property assessment and tax issue, comprehensive re-zoning, completion of traffic improvements in Woodridge Subdivision, Pineland Park and on Roger Storme Drive. Going forward, I intend to focus on additional infrastructure projects in the District, including the Woodridge Canal, the elevation of Penns Chapel Road and improvements to drainage within Covington Country Club Estates and along Highway 22. I thank all the constituents of District 4 for your support that has made my opportunity to serve possible."



District 6
Rebecca Crawford-Howell
P.O. Box 628
Covington, LA 70434
985-590-9134 Cell
985-863-7007 Wk.
rcrawford@stpgov.org

"Comprehensive re-zoning is near completion with District 6 involved in three study areas. I have worked with constituents, the Planning Department and Zoning Commissioners to ensure the future development of our area includes a good balance of both residential and commercial development in appropriate growth areas. I believe in preserving the rural areas to ensure our quality of life but also providing mobile home overlays as options for young families. Many paving and drainage projects have been planned for the upcoming year. To my constituents, I want to once again thank you for your support and vote of confidence."



District 7
Al Hamauei
60162 Oaklawn Avenue
Lacombe, LA 70445
985-789-0412 Cell
985-882-5735 Hm.
amhamauei@stpgov.org

"It is an honor to serve our community every day. Your support and encouragement are greatly appreciated. While sales tax revenues are down, it is more difficult to get our roads paved but I will continue to use the funds we have wisely. Those revenues are also used for drainage and we will start major drainage projects soon. As I tell all of you when you call or email me with issues of concern, please continue to contact me until you are pleased with the results. It is a pleasure to hear from all of you when you have a problem to solve, but the greater joy always comes when we get the job done."

2009 St. Tammany Parish Council



District 8

Chris Canulette
P.O. Box 628
Covington, LA 70434
985-290-6751 Cell
canulette@stpgov.org

"It has been my honor and privilege to continue representing the residents of District 8. I remain dedicated to serving the needs of our community, support initiatives designed to improve our Parish and embracing legislation that enacts the right decisions to guide our Parish into the future. I will especially continue to focus on providing quality ambulance services and emergency response parish wide. My staff and I are here to serve you, please do not hesitate to contact us."



District 9

E. L. "Gene" Bellisario
3090 Gause Blvd., #535
Slidell, LA 70461
985-788-8186 Cell
985-641-2268 Hm.
genebell07@yahoo.com

"I truly enjoy working with the residents of District 9. I will continue to provide district community meetings and direct communication to my constituents. I will work on projects and issues that concern our residents and our Parish as a whole, such as working towards completion of infrastructure projects while keeping a watchful eye on the economy and affected budget constraints. Thanks for your continuing support over the past year."



District 10

Henry Billiot
821 Asbury Drive
Mandeville, LA 70471
985-373-0316 Cell
hbilliot@stpgov.org

"Now more than ever we must be vigilant in preserving our quality of life and the health of our local economy. I look forward to these challenges and AGAIN thank the voters of District 10 for the confidence you have instilled in me. During the remainder of this term, I hope to continue connecting additional subdivisions to the Tammany Trace, introducing a Charter amendment to term limit council members, encouraging economic development and preserving the historical beauty of the City of Mandeville and surrounding areas."



District 11

Steve Stefancik
107 Royal Drive
Slidell, LA 70460
985-649-4580 Hm.
steves@stpgov.org

"District 11 continues to pursue major ongoing projects such as cleanup of the Coin De Lestin canals which is a federal project, the Bayou Liberty Bridge replacement which is a state project, and the new road between Highway 11 and Airport Road which is a parish project. We are continuing to upgrade drainage and road infrastructure throughout the district. The development of Camp Salmen for public recreation is a look into the future and an improvement in our quality of life."



District 13

Richard Artigue
53057 Hwy. 433
Slidell, LA 70461
985-768-1293 Cell
985-649-8952 Hm.
rtartigue@stpgov.org

"I thank the citizens of District 13 for your support. We continue to clean up after Hurricane Katrina and there is still more to do. We are obtaining funding to demolish blighted housing. We have completed several drainage studies and are in the process of planning improved drainage projects and storm protection. I remain committed to the development of a fishing pier on a portion of the old twin span to promote economic development and recreation in the district."



District 14

Ken Burkhalter
P.O. Box 1489
Slidell, LA 70459
985-898-2591 Office
kburkhalter@stpgov.org

"It continues to be a pleasure to serve such a great community as District 14. I remain dedicated to implementing drainage projects, road improvements and the installation of sewerage services in Alton. Beginning the widening of Ben Thomas Road proved to be a major accomplishment in 2009 and will enhance safety along the roadway. I will conduct quarterly community meetings to allow citizens the opportunity to voice their ideas and concerns. Please feel free to contact me if I can be of any assistance."



2010 Capital Projects

District Capital Projects - projects are road improvements unless noted

District 1, Marty Dean

13th St. pave & drainage	\$35,000
N. White Chapel Road	41,605
Bud's Lane	126,299
Service Road Entrance	20,000
Williams Road	55,968
Bricker Road, Phase I	164,300
McDonald Road	140,980
Harold Core Road	37,100
Cousin Road	18,020
District 1 Drainage	82,663

District 2, Gary Cooper

Dreamland Court	\$124,550
Candies Road	150,414
Alonzo Road	71,550
Green Hills Drive Bridge	75,000
Hialeah Drive	147,350
James Jenkins Rd.	50,350
Jerry Willis Rd.	51,940
Avie Lane	38,160
Highland Crest Dr. Ph. 1	182,665
Sheila Rd.	54,272

District 3, James A.

Thompson

J.B. Brown Road	\$45,000
Elize Lee Cemetery Rd.	62,964
Pamela Dr.	77,592
Bill Lee Road	40,229
5th Street	35,000
6th Street	30,000
Ninth Avenue	25,000
Brown Road	30,000
Bluebird Lane	107,590
Lynn Drive	40,000
5th Street	25,000
Rainey Road	132,447
4th Street	45,000
Sandifer Road	68,529
Ed Williams Road East	43,301

District 4, Reid Falconer

Water Oak Lane	\$69,960
Ridgewood Lateral Dr.	60,000
Country Club Drainage	198,541

District 5, Marty Gould

F street - Quincy to end	\$34,450
Colonial Ct drainage & st.	35,000
8th Street	7,950
Walnut St. from Orleans	19,875
Dove Park Turning Radius	20,000

Helenbirg-4th St.-Turn R.	20,000
Rosedown Way at Camden	25,000
Emerald Pines Court	45,000
Lotus Rd. 59 to Ceres	122,536
Crestwood at Bamboo	15,000
Tammany Hills Drainage	50,000
Dove Park Road Repairs	50,000
Cov. Meadows Drainage	40,000
Westwood Drive	15,000
Salmen/MPI Pond	50,000
Orleans at Bodet/Pear St.	15,000
Lionel at Lei Lani Drainage	5,000
Third Avenue	43,307

District 6, Rebecca C.

Howell

Friendship Lane	\$60,685
Oaklawn Drive	43,990
Howell Crawford Road	18,815
Road Runner Road	38,425
Dendinger Rd Phase 2	300,000
Livingston Lane	63,070
Carey Street Drainage	84,060
Brown's Village Rd.	75,000
Sixth Street	135,786
Percy Herrin Road	22,260
Honey Island Road Ph 1	200,000

District 7, Al Hamauei

Fish Hatchery from 1088	\$212,000
Bayou Lac. Cemetery Rd	28,090
Batiste Road	33,920
Rapatel Street Phase 1	85,860
Prosper Drive	55,597
Nature's Way	30,000
S. Oaklawn from Hwy 190	205,766
Hoffman Rd.	101,671
Lange Road	76,585
Lawrence Lane	77,115

District 8, Chris Canulette

Amber-Onyx Erosion Control	25,000
Lake Village Blvd	56,590
Aberdeen Drive	50,400

District 9, Gene Bellisario

Willow Wood Subdivision	\$120,000
Turtle Creek Subdivision	65,000
Northwood Village Sub.	170,000
Pawns Lane Turning Lane	80,000
Stonebridge-Edgelake Rd	35,000
Pearl Street Drainage	94,608

District 10, Henry Billiot

Dupard Retention	\$200,000
District 10 Drainage	138,818

District 11, Steve Stefancik

Dunbar Street	\$60,000
Madie Lane	15,000
Pinnacle Point	15,000
Shakleford Road	15,000
Jackson Road & Drainage	75,000
Treasure Cove-ROW	52,000
Maplewood Street	100,000
Hollywood Dr. w/ turnouts	80,000
Park Avenue	20,000
Ned Avenue	15,000
Bayou Paquet Rd Phase 1	65,000
Dist 11 Drainage	138,662

District 12, Jerry Binder

Oak Harbor/Cypress Lakes	\$90,000
Rama Drive	46,199

District 13, Richard Artigue

Lakeshore Blvd North	\$100,000
Paul Street	20,000
Moonraker Drive Ph. 5	130,000
Lakeview Drive	308,680

District 14, Ken Burkhalter

Ben Thomas Widening	\$177,889
Brown's Village w/Dist 6	75,000

Road Improvements Overview

Funding:	Miles:
Capital Improvement	11.8
Maintenance Overlay	9.7

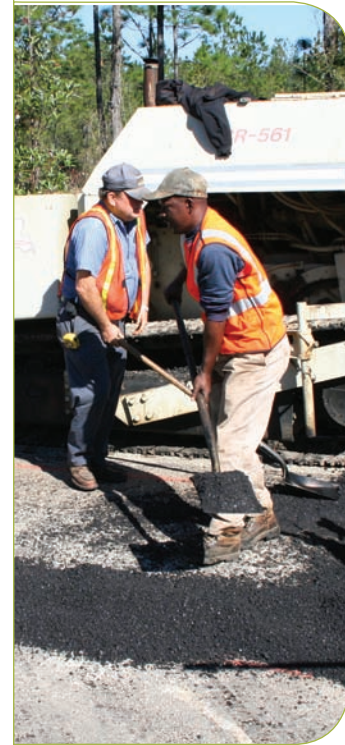


2010 Capital Projects

Capital Projects - Current Parish Funds*

Project Name	Status	Budget Amount
Camp Salmen Road	Construction	\$1,146,938
Haas Rd. Widening	Acquiring rights of way	2,762,880
Harrison Ave. Intersection	Design	750,000
Holly Dr. Bridge	Repair in progress	341,580
Huntwyck Village Drainage Imp.	Design- State Funds Included	5,087,497
Industrial Drive	Repair	150,000
Airport Rd/Hwy 11 Connector Road	Acquiring rights of way	13,651,404
Koop Dr. Extension West	Construction	1,291,623
Koop Dr. Extension East	Design	710,000
Lakeshore Blvd. North	Repair	200,000
Learning Center Rd. (University Square)	Design	500,000
Mire Rd. turning lane	Design	250,000
Oak Harbor Intersection widening	Design	300,000
Carr Dr. bridge replacement	Construction	30,535
Pearl Acres Rd. widening	Bidding Process	1,610,525
Polders Lane widen & drainage	Design	200,000
Tantela Ranch Rd. Extension	Design & Wetlands Permitting	400,000
Covington/Hwy 21 Bypass Road	Under Contract	4,403,879

*Additional projects may be in design, rights-of-way acquisition, or construction in 2010 due to the multi-year cycles of major infrastructure projects. Not all of the above projects are funded through construction in the 2010 budget.



Capital Road Projects - American Recovery & Reinvestment Act Funds

Project	Status	Funding Source	Construction Budget
I-59 @ Military Interchange	Complete	DOTD Stimulus	\$1,279,032
I-12 @ LA Highway 59 Interchange	Construction	DOTD Stimulus	2,945,457
I-12 @ US Highway 11 Interchange	Construction	DOTD Stimulus	5,265,577
I-12 @ LA Highway 21 Interchange	Let March 2010	MPO Stimulus*	7,500,000**
Brownswitch/Military Road Intersection	Let March 2010	MPO Stimulus*	1,000,000**
Highway 190 @ Northpark Intersection	Let March 2010	MPO Stimulus*	500,000**
LA 21 @ Brewster Intersection	Let March 2010	MPO Stimulus*	2,500,000**
Brownswitch @ Robert Road Roundabout	Let March 2010	MPO Stimulus*	2,500,000**
LA Highway 433 @ Voters Road Intersection	Let March 2010	MPO Stimulus*	2,500,000**

*MPO = Metropolitan Planning Organization

** Maximum LaDOTD Construction Estimate

2009 Financial Summary-Unaudited

Revenue Overview

Source	Total	Detail	Capital	Operating	Debt Service
General Fund*	17,784,482	Ad Valorem, Permits	\$110,900	\$17,115,469	\$558,113
Public Works**	39,645,770	2% Sales Tax, Ad Valorem	11,978,355	24,104,883	3,562,532
Justice Complex Sales Tax**	9,272,820	1/4% Sales Tax	921,823	4,933,897	3,417,110
Jail Sales Tax**	9,175,193	1/4% Sales Tax		7,664,193	1,511,000
Public Health/Utilities**	12,211,894	Ad Valorem, Fees for Service	934,989	9,986,105	1,290,801
Criminal Courts**	3,561,270	Court Fines & Costs		3,561,270	
TOTAL	91,651,428		\$13,946,067	\$67,365,816	\$10,339,545

* Revenues derived from Ad Valorem (Property Tax) and Permitting fees to fund State Mandated costs and Parish Agencies.

**Funds strictly dedicated as per vote of the people of St. Tammany.

Expenditures by Area

Area	Total	Detail	Capital	Operating	Debt Service
State Mandated Costs	\$4,539,092	22nd Judicial Court, Registrar of Voters, Assessor, District Attorney		\$4,539,092	
General Fund	13,469,008	Parish Departments, Community Action, Buildings, Transportation	\$4,110,900	8,799,995	\$558,113
Public Works	36,599,670	Roads, Drainage, Lighting & Special Districts	11,978,355	21,058,783	3,562,532
Jail Sales Tax	9,175,193	Dedicated for Jail Operations		7,664,193	1,511,000
Justice Complex Sales Tax	8,830,867	Dedicated for Justice Center Operations	921,823	4,491,944	3,417,100
Public Health/Utilities	10,561,930	Utilities, Coroner, Environmental Services	934,989	8,097,152	1,529,789
Criminal Courts	3,448,758	Courts		3,448,758	
TOTAL	\$86,624,518		\$17,946,067	\$58,099,917	\$10,578,533

Permits: Ten Year History

	2000	2001	2002	2003	2004	2005	2006	2007	2008	2009
Single Family (New)	1,629	1,912	2,060	2,457	2,920	2,255	2,238	1,310	799	535
Mobile Homes	470	356	447	376	308	373	497	438	552	233
Commercial	189	376	299	446	454	561	558	552	492	436

Environmental Services

On-Site Sewage Inspection Program	
Inspections	1,593
New Systems Installed	125

Litter Abatement

Miles of Road Cleared	306
Bags of Trash Collected	14,702

Department Reports

Finance

2008 Financial Summary-Unaudited

General Fund Revenues

General fund revenue source breakdown:

Taxes (Ad Valorem)	\$3,783,724	(21.55%)		
Self-generated Fees	\$9,776,882	(55.68%)		
Bond Proceeds - Utility System	4,000,000	(22.78%)	Total	\$17,560,606

General Fund Expenses

Parish Departments

Planning	\$883,585	
Permits	1,264,012	
Community Action Agency	83,089	
Landfill	2,607	
Legal	336,200	
Cultural & Governmental Affairs	667,387	
Building Maintenance	374,435	
Fire Services	107,414	
Camp Salmen	169,512	
Code Enforcement	513,883	
Parish Administration	3,538,953	
Subtotal	7,881,077	44.23%

Capital

Utility System Acquisition	4,000,000	22.45%
-----------------------------------	------------------	---------------

General Expenditures

Fairgrounds	\$ 46,446	
Greater St. Tammany Airport	64,195	
Building Operations	135,877	
Archive Management	50,000	
Tax Collection Fees	459,016	
Economic Development	83,084	
Subtotal	\$ 838,618	4.71%

Debt Service

Debt Service - Utility System	\$ 35,903	
Debt Service - DHH Building	511,280	
Subtotal	\$ 558,113	3.13%

State Mandated Costs

22nd Jud. District Court	\$1,888,914	
Ward Courts	204,734	
District Attorney	1,710,507	
Clerk of Court	93,520	
Registrar of Voters	203,238	
Tax Assessor	30,593	
Sheriff	56,236	
Parish Jail	79,469	
Veterans Affairs	51,797	
Co-Op Extension Services	71,848	
Jury Costs	13,128	
State Pension Assessment	121,920	
Humane Society	5,000	
Jury Commissioners	8,190	
Subtotal	4,539,092	24.48%

Total	\$17,816,900	100.00%
--------------	---------------------	----------------

Public Works

	Work Orders Requested	Work Orders Completed	Percent Completed
Area 1			
Brewster Barn	962	919	95.5%
Covington Barn	1,041	810	77.8%
Folsom Barn	879	872	99.2%
Hwy. 59 Barn	708	693	97.9%
Area 2			
Bush Barn	835	824	98.7%
Fritchie N. Barn	1,402	1,391	99.2%
Hickory Barn	595	556	93.4%
Area 3			
Airport Barn	781	752	96.3%
Fritchie S. Barn	1,356	1,332	98.2%
Keller Barn	1,219	1,141	93.6%
Area 4			
Tammany Trace	570	565	99.1%
Vehicle Maint.	1,289	1,281	99.4%
Parish Wide:			
Sign Div.	813	807	99.3%
Total	12,450	11,943	95.9%



It is often difficult for citizens to call with work orders during business hours. To make it easy to communicate on your schedule, you can submit work order requests at any time, day or night, through the internet at

www.stpgov.org/workorders

Work order completions can also be tracked on the same web page.

Department Reports

Health & Human Services

Office of Social Services:

Information and referral services, liaison with the nonprofit & faith based communities, outreach services through the Mobile Community Information Center Program.

Number of individuals assisted

Information/Referral: 564

Online Community Resource List

Number of Organizations listed: 92

Community Action Agency:

Utility assistance, weatherization, supportive housing, the Repairs on Wheels program and nonprofit grant assistance

2009 Active Grants: \$7,560,421.66

Number of individuals assisted

LIHEAP Utility Assistance: 4,510

Other Emergency Assistance: 305

Housing Assistance: 473

Transportation Office:

Manages transportation grants, rural and urban transportation programs

2009 Active Grants: \$ 11,474,098.32

Number of goSTAT Rides

Urban: 5,754

Rural: 12,203

Total: 17,957

Community Development Office:

Manages the CDBG grants and programs for infrastructure and community development.

2009 Active Grants: \$ 2,448,815.53

Repairs on Wheels

Households Weatherized: 48

Volunteer Hours: 394

Community Health Office:

Special Needs emergency shelter program, coordinates parish medical radio communication system, health services, and program development.

Shelter Database

Registered Individuals: 1,103

Drainage 2010

*Many of these drainage projects are multi-year efforts. Funding sources may include local taxes, grants and impact fees.

Location	Budget*
Arrowwood Pond Weir	\$ 200,000
Brown's Village Road	500,000
Greenleaves Z-Wall	200,000
Haas Road Pond	1,528,906
Lowe Pond Canal Erosion	500,000
Parc du Lac Weir	150,000
Robert Road Area Drainage	300,000
Slidell Levee	512,400
Timberbranch Pond/Bulkhead	175,000
W-15 Lateral @ Beth Drive	50,000
Woodlands Drainage Mitigation	100,000

LRA - CDBG Drainage Projects - Scheduled for 2010

Area	Budget
Abita River Sub Basin Detention Pond (Tammany Hills)	\$1,622,284
French Branch Channel Improvements	6,784,574
Labarre St. Detention Pond & Drainage Improvements	2,822,365
Westwood Detention Pond	9,487,742
Bayou Chinchuba Detention	3,791,034
Cypress Bayou Detention Pond	5,185,948
Grand Total	\$29,693,947
Local Match Included	\$10,535,442



St. Tammany Parish Government Directory

P.O. Box 628 • Covington, LA 70434

ADMINISTRATION

Kevin Davis, Parish President
St. Tammany Parish Government
P.O. Box 628
Covington, LA 70434
985-898-2362
Fax 985-898-5237
kdavis@stpgov.org

Bill Oiler, Chief Administrative Officer
985-898-2445
Fax 985-875-2603
oiler@stpgov.org

Kim Salter, Assistant CAO
985-898-2445
Fax 985-875-2603
kim@stpgov.org

James Smith, Executive Assistant
to the Parish President
985-898-2362
Fax 985-898-5237
jsmith@stpgov.org

Gibb Farrish, Special Projects
Director
985-875-2602
Fax 985-898-5237
gibb@stpgov.org

Gina Campo, Director of
Departments
985-809-7865
Fax 985-867-5058
gcampo@stpgov.org

PARISH COUNCIL

Mike Sevante, Council Administrator
Theresa Ford, Council Clerk
Neil Hall, Council Attorney
985-898-2591
Fax 985-898-2593
council@stpgov.org

ANIMAL SERVICES

Melisa Sullivan-Piwetz, Director
985-809-0183
Fax 985-871-4507
msullivan@stpgov.org

BUSINESS DEVELOPMENT

Irma Cry, Liaison
985-898-2761
Fax 985-249-7574
icry@stpgov.org

CULTURAL & GOVERNMENTAL AFFAIRS

Suzanne Parsons Stymiest, Director
985-898-5243
Fax 985-898-2798
sparsons@stpgov.org
*Commission on Cultural Affairs,
Website, Access St. Tammany
Channel 10.*

ENGINEERING

John E. Smith, Director
985-898-2535
Fax 985-898-5205
jessmith@stpgov.org

ENVIRONMENTAL SERVICES

Greg Gorden, Director
985-898-2535
Fax 985-898-2523
es@stpgov.org

FACILITIES MANAGEMENT

Bruce Crouch, Director
985-898-2792
Fax 985-898-3073
brucec@stpgov.org

FINANCE

Leslie Long, Director
985-898-2513
Fax 985-898-5238
finance@stpgov.org
985-898-2520
Fax 985-898-5227
Purchasing, bid procedures
www.stpgov.org/purchasing
Personnel
www.stpgov.org/personnel

FIRE SERVICES

John P. O'Neil, Director
985-898-2987
Fax 985-898-3030
joneil@stpgov.org

HEALTH AND HUMAN SERVICES

John Tobin, CRC, Director
jtobin@stpgov.org
socialservices@stpgov.org
Office of Social Services
985-898-3074
Community Action Agency
Covington 985-893-3923
Slidell 985-646-2090
Transportation 985-809-2989
*Community Development &
Community Health*
985-773-1806

HOMELAND SECURITY AND EMERGENCY PREPAREDNESS

Dexter Accardo, Director
985-898-2359
Fax 985-898-3030
daccardo@stpgov.org

LEGAL DEPARTMENT

Kelly M. Rabalais, Executive Counsel
985-898-3427
Fax 985-867-5124
kmrabalais@stpgov.org
Code Enforcement
985-867-5098
Fax 985-249-7533

MANAGEMENT INFORMATION SERVICES

Rick Loggins, Director
985-898-2448
Fax 985-898-5289
misdept@stpgov.org
Parish Archives

PERMITS & REGULATORY

Kenneth Wortmann, Director
Koop Dr: 985-898-2574
Slidell: 985-646-4166
Fax Koop 985-898-2785
Fax Slidell 985-646-4174
permits@stpgov.org

PLANNING

Sidney Fontenot, Director
985-898-2528
Fax 985-898-3003
planning@stpgov.org

PUBLIC WORKS

Shannon Davis, Director
985-898-2557
Fax 985-898-2549
dpw@stpgov.org
Submit work orders online at
www.stpgov.org/workorders

TAMMANY TRACE

Lisa Pratt Maddox, Director
985-867-9490
or toll free 1-800-43-TRACE
Fax 985-871-6971
lmaddox@stpgov.org

Website shortcuts:

[www.stpgov.org/\(insert department name here\)](http://www.stpgov.org/(insert department name here))
Example:
www.stpgov.org/engineering



St. Tammany Parish Annual Report 2009



St. Tammany Parish
 PO Box 628
 Covington, LA
 70434
www.stpgov.org

Animal Services Overview	Number
Calls for Service	6,491
Animals Taken In	6,412
Increase # of animals from 2008	521
Animals Adopted	716
Animals Reclaimed	398
Spayed & Neutered via Prevention Grant	676
Transferred to Rescue Groups	126
Unwanted Kittens & Puppies Abandoned at Shelter	2,670
Increase # of puppies & kitten abandoned at shelter from 2008	827
Euthanized	4,872

Planning Overview	Number
Public Hearing Items	313
Administrative Reviews	4170
Code Enforcement Cases Closed	1,814

Code Enforcement	Number
Cases opened	2,209
Cases brought into compliance	1,979
Sent to Administrative Hearing	108
Active cases	122

Tammany Trace Overview	Visitors	Kids Konnection Visitors	Total
2004	175,034		
2005	164,145		
2006	191,254		
2007	191,135	85,149	278,284
2008	178,828	85,862	264,690
2009	196,113	100,276	296,389

STPGOV.ORG Web Overview	Individual Sessions
1st Quarter	140,997
2nd Quarter	142,904
3rd Quarter	169,317
4th Quarter	165,744
Total	618,962

Animal Services: Despite low or no cost spay & neuter programs, the number of unwanted kittens and puppies abandoned at the shelter continues to grow, up 827 from 2008. The parish animal shelter accepts all animals, even those turned away by other shelters. **PLEASE** spay & neuter your pets today. **PLEASE** adopt your next pet from an animal shelter.

Homeland Security: To date, St. Tammany Parish has completed over \$10 million in federal mitigation grant projects for severe repetitive loss structures due to flooding. An additional \$7.6 million was awarded in 2009 and an additional request for \$7.3 million is pending.

Register to receive e-mail updates for news releases and other parish information at www.stpgov.org. During emergencies, the Parish President's message is updated with current STP information.

If your homeowner's group or civic organization would like a **speaker** from St. Tammany Parish government, email any of the department heads listed inside this cover or gac@stpgov.org. Topics include Emergency Preparedness, and St. Tammany Parish Archives & History.

If you don't have cable, you can watch **Channel 10** live on your computer. Go to www.stpgov.org, click the **Online Services** tab, then the **Watch Channel 10** link!